



Thorrington Scout Camp

pond dipping

activity pack...

contents...

- risk assessment (where applicable).
- activity sheets (where applicable).

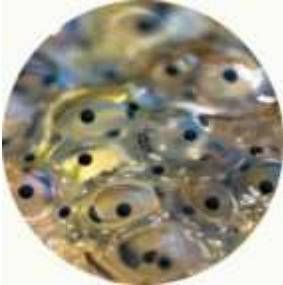
Please be aware that risk assessments are provided in an advisory capacity only, and a full risk assessment should be undertaken by the group leader.

Pond Dipping Risk Assessment.

Thorrington Scout Camp

Hazard	Initial Risk	Possible Actions	Actions Recommended	Residual Risk	Review date,
Tripping or slipping on bank.	Medium	No running on pond side	Ensure verbal instructions are given to adult in charge	Low	01/04/2023
Falling into pond	Medium	No jumping from bank into pond, no pushing or horseplay	Appropriate level of adult supervision at side of pond with children	Low	01/04/2023
Weil's disease	Medium	Regular monitoring of vermin Weil's notices No direct contact with food with wet hands Cover cuts and grazes	Wash hands with soap and warm water immediately after activity.	Low	01/04/2023

Amphibian spots



frogspawn

round balls of 'jelly'

date spotted:

.....



toadspawn

long strings of 'jelly'

date spotted:

.....



tadpoles

dark with round heads and long tails

date spotted:

.....



newts

like lizards that live in water

date spotted:

.....



frogs

green with legs that jump high!

date spotted:

.....

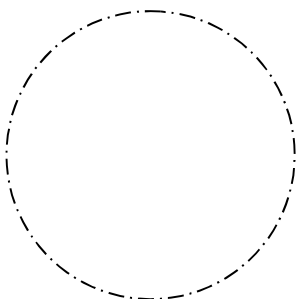


toads

like frogs but with darker bumpy skin

date spotted:

.....

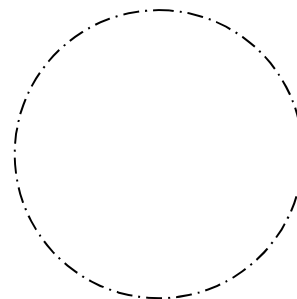


I also saw.....

.....

date spotted:

.....



I also saw.....

.....

date spotted:

.....



Pond spots

How many of these can you find on a pond dip?

You might find some in the pond, but remember to look up in the air and around the pond to find the rest.



Pond snail



Whirligig beetle



Pond skater



Frogspawn



Tadpoles



Water boatman



Duckweed



Dragonfly



Yellow flag



Heron



Lily pads



Damselfly



Start your own adventure at naturedetectives.org.uk