

Activity Pack



Pond Dipping

This pack contains the following information:

- Risk Assessments (where applicable)
- Activity Sheets (where applicable)
- Permission Slips (where applicable)

Please be aware that risk assessments are provided in an advisory capacity only, and a full risk assessment should be undertaken by the group leader, in accordance with Scouting/Guiding guidelines.

Additionally, where an activity pack contains a permission slip, this is mandatory and must be completed prior to taking part in the activity.



Scouts

Thorrington
Scout Camp

Risk Assessment

Activity:	Pond Dipping	Date Last Reviewed:	02/05/24	Date Next Review Due:	01/05/25
Venue:	Thorrington Scout Camp				

Hazard	Initial Risk	Possible Actions	Actions Taken	Residual Risk	Review date, plan and sign
Tripping or slipping on bank.	Medium	No running on pond side	Ensure verbal instructions are given to adult in charge	Low	01/05/2025 C. Jay
Falling into pond	Medium	No jumping from bank into pond, no pushing or horseplay	Appropriate level of adult supervision at side of pond with children	Low	01/05/2025 C. Jay
Weil's disease	Medium	Regular monitoring of vermin Weil's notices No direct contact with food with wet hands Cover cuts and grazes	Wash hands with soap and warm water immediately after activity.	Low	01/05/2025 C. Jay

Pond minibeasts

These animals come in a wide range of sizes but are all shown at the same size here so it's easy for you to see all their features.

No legs



Phantom midge larva



Water fleas
(cyclops and daphnia)



Pond snail



Tadpole



Leech



Bloodworm

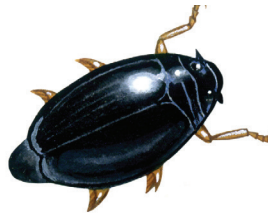
6 legs



Water beetle larva



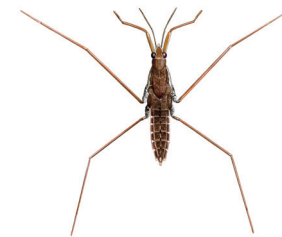
Backswimmer



Whirligig beetle



Water beetle



Pond skater



Lesser water
boatman

4 legs

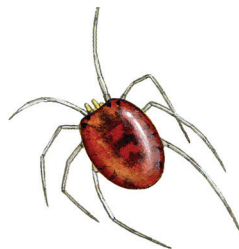


Newt

8 legs



Water spider



Water mite

More than 8 legs



Water louse



Freshwater shrimp



The RSPB is a registered charity in
England & Wales 207076, in
Scotland SC037654 382-0507-14-15

Spot it! Ponds



Ben Andrew

Frog



Ben Andrew

Toad



David Kjaer (rspb-images.com)

Newt



Roger Tidman (rspb-images.com)

Water boatman



John Barber (fotolia.com)

Pond snail



Andy Hay (rspb-images.com)

Dragonfly



Richard Revels (rspb-images.com)

Damselfly



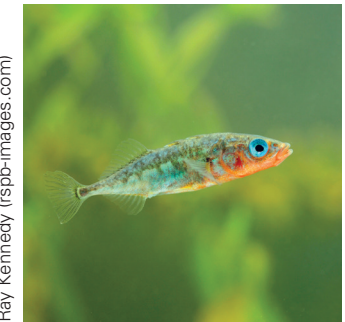
Ben Andrew (rspb-images.com)

Pond skater



Neil Phillips (Alamy)

Hoglouse



Ray Kennedy (rspb-images.com)

Stickleback



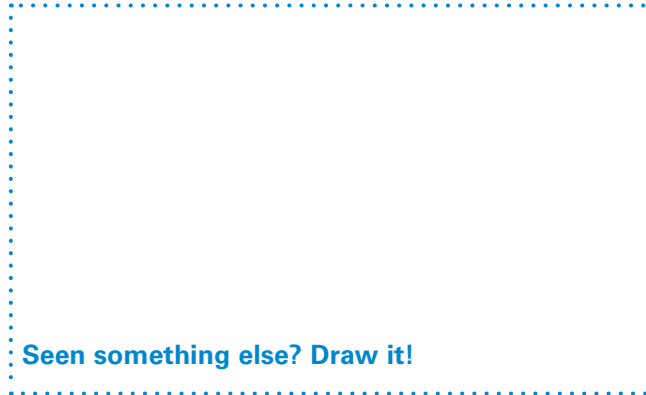
Laurie Campbell (rspb-images.com)

Water lilies



Sue Kennedy (rspb-images.com)

Reedmace



Seen something else? Draw it!



The RSPB is a registered charity in England & Wales 207076, Scotland SC037654
000-0043-15-16

Frog spawn by Richard Bedford, tadpole by Ray Kennedy, toadspawn by Nick Upton, toadlet by Ray Kennedy (all rsps-images.com)